

# CERTIFICATE OF LOCATION OF GOVERNMENT CORNER

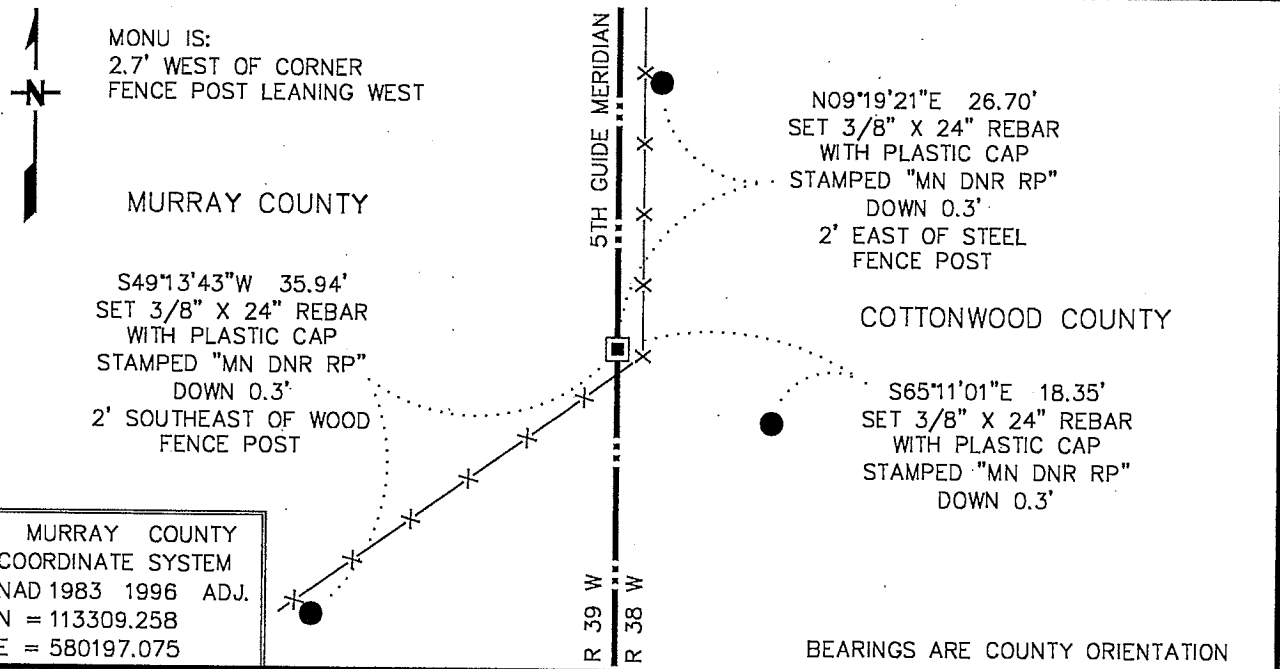
EAST QUARTER Corner of Section 24, Township 105 N, Range 39 W  
5TH Principal Meridian, State of Minnesota, County of MURRAY

At the corner location shown on the sketch:

On 6/29/16 found a 1 1/4" X 1 1/4" PERFORATED TUBE, DOWN 0.2'  
DATE

left monument as found,  lowered monument,  removed monument (explain)

On \_\_\_\_\_ Placed a \_\_\_\_\_  
DATE



Statement of evidence for this corner location is on back of this page.

OCTOBER 2016  
WMA09007

I hereby certify that this plan, specification, or report was prepared by me or under my direct supervision and that I am a duly Licensed Land Surveyor under the laws of the State of Minnesota.

SIGNATURE Bruce W. Shepherd  
BRUCE W. SHEPHERD

DATE 12/6/16

License Number 17003

The DNR Division of Lands and Minerals contacted the following for survey information:

Website - [mngeo.state.mn.us](http://mngeo.state.mn.us) for GLO plat and field notes

Website - [murray-countymn.com](http://murray-countymn.com) for section and quarter section corner information

Cottonwood County Recorder's Office

Zieske Land Surveying Inc. of Windom

The following is from a Certificate of Location of Government Corner, signed by Bruce W. Shepperd, LS 17003, on December 20, 1985, and on file - not recorded - in the Murray County Recorder's Office:

*This corner was originally established by the U.S. General Land Office survey in 1857.*

*The government notes show:*

*set post deposited charcoal, made mound, trench, and pits and planted plum seed northeast and southwest.*

*In April 1983, the DNR Bureau of Engineering contacted the following for corner information:*

*Cottonwood County Offices of the Recorder and Highway Engineer*

*Murray County Offices of the Recorder and Highway Engineer*

*Sioux Engineering of Windom*

*Martin Land Surveying of Worthington*

*The following information was obtained from the Cottonwood County Recorder's Office:*

*Plat 49 contains a resurvey of Township 105 North, Range 38 West done by C.W. Gove, County Surveyor, in 1898. Plat shows that corner was established:*

*2640 feet from the northeast corner of Section 24*

*342 feet from meander corner number 4*

*A 1½" by 2½" by 30" cast iron stake was set to mark this location*

*The following information was obtained from the Office of Sioux Engineering:*

*A copy of a resurvey plat of Township 105 North, Range 38 West, obtained from Howard Boeck of Westbrook, and done by C.W. Gove, County Surveyor, in 1898, shows corner but does not indicate what was found or set. Corner is shown:*

*2640 feet from the northeast corner of Section 24*

*342 feet from meander corner number 4*

*The following information was obtained from the Cottonwood County Recorder's Office:*

*A resurvey plat of Township 105 North, Range 38 West done by C.W. Gove, County Surveyor, in 1898, shows corner but does not indicate what was found or set. Corner is shown:*

*2640 feet from the northeast corner of Section 24*

*342 feet from the meander corner number 4*

*The following information was obtained from the DNR Bureau of Engineering's Office:  
In 1952, a government brass disc was found at corner.*

*In May 1983, the DNR Bureau of Engineering traversed to the area of the corner and found a 1 ½" by 2 ½" by 30" long iron bar. The iron bar was found to be 2641.28 feet from the northeast corner of Section 24.*

*Accept the iron bar as the location of the corner.*

*Traverse information is available from the DNR Bureau of Engineering.*

*The following ties are shown to a 1 ¼" by 1 ¼" x 14" perforated steel tube with an aluminum cap stamped "DNR SURVEY MARKER", which was set up 0.1 of a foot over the found iron bar per the sketch of reference ties:*

*a) 2.2 feet west of a fence*

*b) DNR nail & disc on west side of wood post, up 2 feet, N6°E, 12.14 feet*

*c) DNR nail & disc on north side of corner fence post, up 2 feet, S80°E, 2.73 feet*

*d) DNR nail & disc on north side of wood post, up 1 foot, S32°W, 17.87 feet*

2016 June 29, the DNR Division of Lands and Minerals found a 1¼" by 1¼" perforated steel tube, down 0.2 of a foot at corner. Only found one record tie:

the corner fence post, which is currently leaning and unstable

Analysis of the above information led the DNR Division of Lands and Minerals to conclude that the found 1¼" by 1¼" perforated steel tube, which was set over a found iron bar marks the location of the corner as established in 1898 by C.W. Gove, County Surveyor.